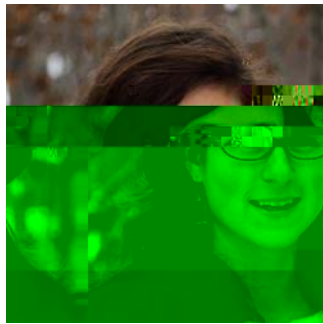




For Immediate Release
2015

I 5' : c i bXUh]cb'UkUfXg' a][fUhcfm'V]fX'fYgYUfW\` [fUb cX'5 jHU]Y'UVg]`j]MY@bX' 6



c Z` H i bXfU ! bYgh]b[`D UggYf]Wg]b'5 ` Ug _ U " Ĩ` H \Y` d bWYbYUWg'cb'h\Y'gh i Xm'c Z`]bgYWh`
d fYm'U j U]` UV` Y'Ug` Z ccX' Zcc'f'U]fU]b'h\Y'UfWh]W " ` A Wac'f'g'Wc` ` UVcfUh]b[`k]h'h\Y' I G`
; Yc` c [JWU` ` G if j Ym'Ug` d Uf' d Z b]Yb[`5 fWh]W` 9 WcgmghY a g]U]b] Y ž` k \W\`gh i X]Yg'h\Y' a d UWh'c Z`
W`]a UhY'W\Ub[Y'cb'V]fXg]b'5 ` Ug _ U " `

< Y]X]` D YUfgcb ž` Ugg]hd fc Z Yggcf'c Z b'V]c` c [m ž` UbX' H fX` U m bYg ž` U'fYWYk'WhcfU` `[fUX i UhY`
]b` Z]g\Yf]Yg ž` U` gc'fYWY] j,YX` ; hc ž` i d d cfh'h\Y]f` ^ c]b' d' f' b'c` YX` Ĩ` H \Y` F c` Y'c Z` 5 j]Ub` D fYXU` c f g`
]b` B i hf]Ybh` H fUbg d cfh]b` U`]U` UWh` : YX` G c i h \Y Ugh'5 ` Ug _ f]b' g]h'U g m ghY a " \Y` d H f c` ^ YWh'fY` UhYg`

> i bYU i` = WY Z]Y` X'hc'h\Y'Ygh i c]b'Yh'c Z` 6 Yfg' 6 Um ž` Ug` k` ` Ug` Y I U a]b]b[`h\Y' a d UWh'c Z`
W`]a UhY'XmbU a]Wg` d Yg` Y h k c` Y WcgmghY a g " `

H \Y` ; U j]b'5 kUfX]g' d fc j]YU]U b` m'hc'g i d d cfh'fYgYUfW X` g]b'V]Yg' Z c i bX'Yf]d Y f a UbYbh` m`
cf'gYUgcbU` ` m]b'5 ` Ug _ U b]j]b'W k UhYfg ž`]bW` i X]b]V]c]Y]c[m ž` [YbYfU` ` YWc` c [m`UbX`\UV]hUh`
fY` Uh]cbg\] d g " ` H \Yg'Y'h'k'Wgh'k' ^ ` `Ugg]gh]b' i bXYfghU b]X]b]W`]a UhY'W\Ub[Y' a Um'U Z Z YWh`
5 ` Ug _ U D g`U j]Ub` d c d i` Uh]cb'c j Yf'h]a Y " `

H \Y` ; U j]b' ; fUbh ž` d Uf'h'c Z` h d Y b]X]h]cb' D g` Wcbgc`]XUhYX` Y b]X]b]k Z i bX ž` k Ug` YghUV`]g\YX]b`
% - , % k]h\U` [Z h' Z fca` h\Y` 5]W\U b]Y W X' 7 c " ` hc`\cb' d f' a` c` Y m'ac Z` 5 b[ig` ; U j]b ž` Ub`

environmental scientist and advisor to ARCO. Gavin was hand-picked by ARCO Chairman Robert O. Anderson to observe, categorize and quantify the little known flora and fauna of Prudhoe Bay in 1969. Gavin's work was instrumental in helping ARCO and the scientific community draw conclusions, pro or con, about the impact of oil field development on the ecology of the North Slope and to recommend operational changes that would minimize or negate any adverse effects on the environment.